

# Home Concepts™





*Kingston Square Maple, Natural*

Whether you are a new family building an affordable first home or breaking ground on a weekend get away spot, the Home Concepts brand by Wellborn Cabinet, Inc., was designed with you and your builder in mind. Home Concepts is part of the Wellborn family of products, ensuring quality at an economical price point.

Whatever you choose, Home Concepts is sure to have a style to fit your décor and budget. From our family to yours, we present the Home Concepts Series.

*Kingston Square Maple, Light*





*Kingston Arch Maple, Spiceberry*



*York Maple, Light*



*Kingston Arch Maple, Light*



*Arbor Square Poplar, Medium*



*Kingston Square Oak, Medium*



*Kingston Arch Oak, Light*



*Kingston Arch Oak, Light*



*Kingston Square Oak, Medium*



*Hampton Square Maple, Light*

*Hampton Square Maple, Medium*

*Hampton Square Maple, Natural*





*Hampton Square Oak, Medium*

*Hampton Square Oak, Light*





*Providence Thermofoil, White*

*Providence Thermofoil, White*







*Metro Laminate, Sienna*



*Towne Laminate, Natural Maple*



# Door Styles

## Arbor

- Full Overlay
- Solid Wood Raised Center Panel
- Profiled Door and Drawer Front Edges

### Arbor Square Poplar



Medium Sable Sienna

### Arbor Arch Poplar

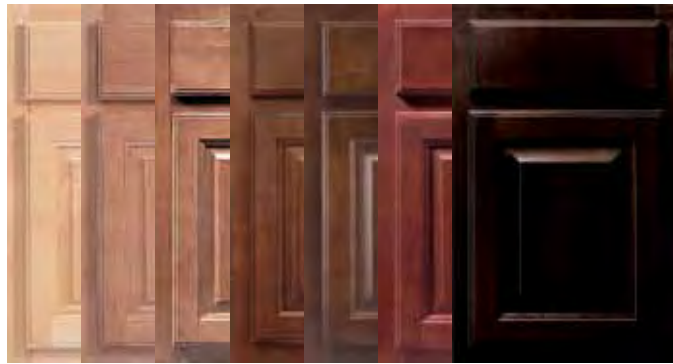


Medium Sable Sienna

## Kingston

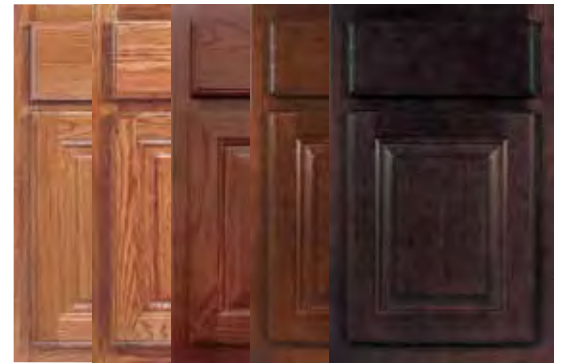
- Traditional Overlay
- Veneer Raised Center Panel
- Profiled Door and Drawer Front Edges

### Kingston Square Maple



Natural Light Medium Sable Sienna Spiceberry Coffee

### Kingston Square Oak



Light Medium Sable Sienna Coffee

### Kingston Arch Maple



Natural Light Medium Sable Sienna Spiceberry Coffee

### Kingston Arch Oak



Light Medium Sable Sienna Coffee

## Hampton

- Traditional Overlay
- Veneer Recessed Center Panel
- Profiled Door and Drawer Front Edges

### Hampton Square Maple



Natural Light Medium Sable Sienna Spiceberry Coffee

### Hampton Square Oak



Light Medium Sable Sienna Coffee

## Layton Maple



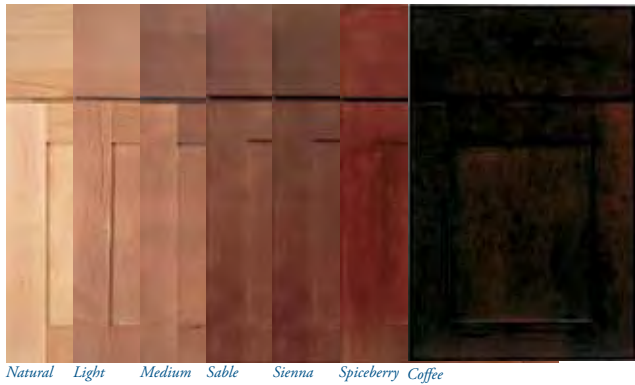
## Layton Oak



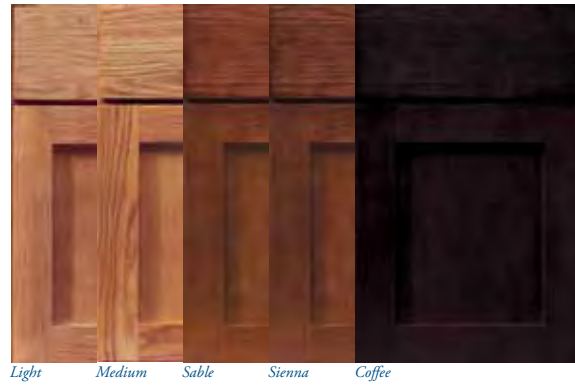
### Layton

- Shaker Traditional Overlay
- Veneer Recessed Center Panel
- Square Door and Drawer Front Edges

## York Maple



## York Oak



### York

- Shaker Full Overlay
- Veneer Recessed Center Panel
- Square Door and Drawer Front Edges

## Cambridge Square MDF



## Cambridge Arch MDF



### Cambridge

- Full Overlay
- Raised Center Panel Appearance
- Square Door and Drawer Front Edges

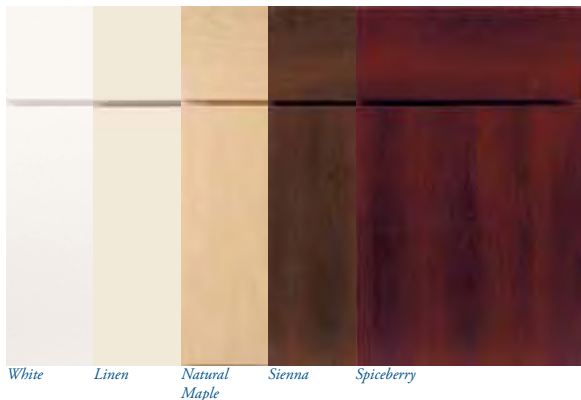
## Providence Thermofoil



### Providence

- Traditional Overlay
- Raised Center Panel Appearance
- Profiled Door and Drawer Front with Routed Finger Pull

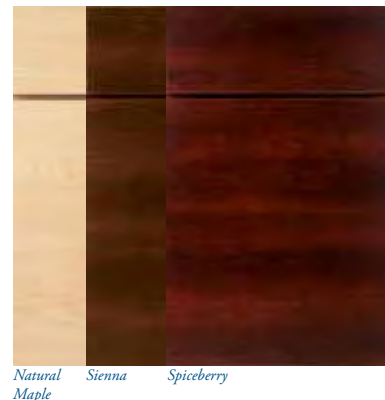
## Metro Laminate



### Metro

- Full Overlay
- Doors have Vertical Graining
- Drawer Fronts have Horizontal Graining
- Melamine Door and Drawer Front with Edge Banding on all Edges

## Towne Laminate



### Towne

- Full Overlay
- Doors and Drawer Fronts have Horizontal Graining
- Melamine Door and Drawer Front with Edge Banding on all Edges

# Accessories



*Whatnot Shelf*



*Oven Cabinet*



*Diagonal Corner Wall Cabinet*



*Microwave Cabinet*



*Base Blind Corner Cabinet with Swing Out Shelves*



*Sliding Shelves*



*Base Lazy Susan*



*Double Wastebasket*



*Shelves*



*Countertop Support*



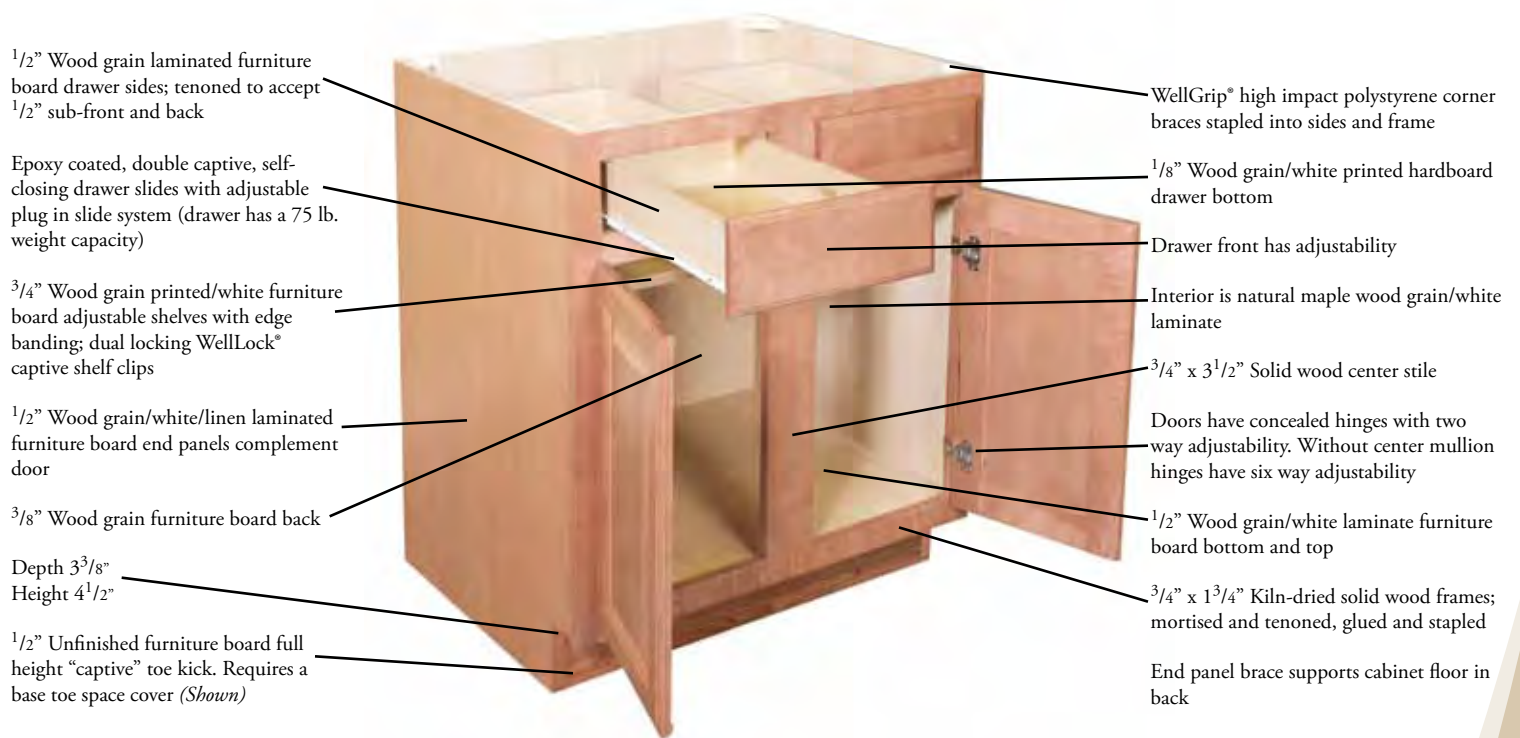
*Desk End Panel*



*Vanity Knee Drawer*

# Construction

## BASE



**NOTE:** For Thermofoil door styles, the cabinet interior and exterior are matching white laminate, the face frames are white finished maple and the drawer front is 3/4" thermofoil laminated furniture board.

For laminate door styles in White and Linen, the cabinet interior is matching white laminate and the exterior is matching white or linen laminate, the face frames are matching finished maple and the drawer front is 3/4" melamine laminated front.

Drawer depth is 18<sup>1</sup>/<sub>2</sub>" for base and vanity cabinets. Drawer sides, sub front and back are 1/2" white laminated furniture board.

## WOOD SPECIES

### Maple

Maple is widely used in the cabinetry industry. This wood species features a straight grain with several distinctive characteristics. These include unique figures such as bird's-eye, fiddle back, mineral streaks and curly grain patterns. Finely textured with a natural luster, this creamy-white to light reddish-brown wood is often used for cabinets and floors.

### Oak

Authentic American red oaks are open-pored and have grain patterns. Wellborn's manufacturing technology presents oak with straighter grains than most cabinet lines, and our process minimizes the wide grains and reduces the widths of cathedrals in oak.

### Poplar

Poplar is generally straight grained with fine, even texture. The wood has creamy white to pale brown color tones. Poplar is beautiful with medium to dark stains and paints.

### MDF

Using high pressure and temperatures, MDF is formed by combining wood fibers with a wax resin binder to form panels. It is made of wood veneer. It is much more dense than normal particle board. This is a durable and tough wood product, commonly used in the construction industry.

### Laminate

Laminate is a decorative panel with resin-saturated printed paper thermally fused to a particleboard or MDF core. The thermally fused melamine process bonds the paper and board using heat and pressure. The paper gives the appearance of wood grain or painted finishes.

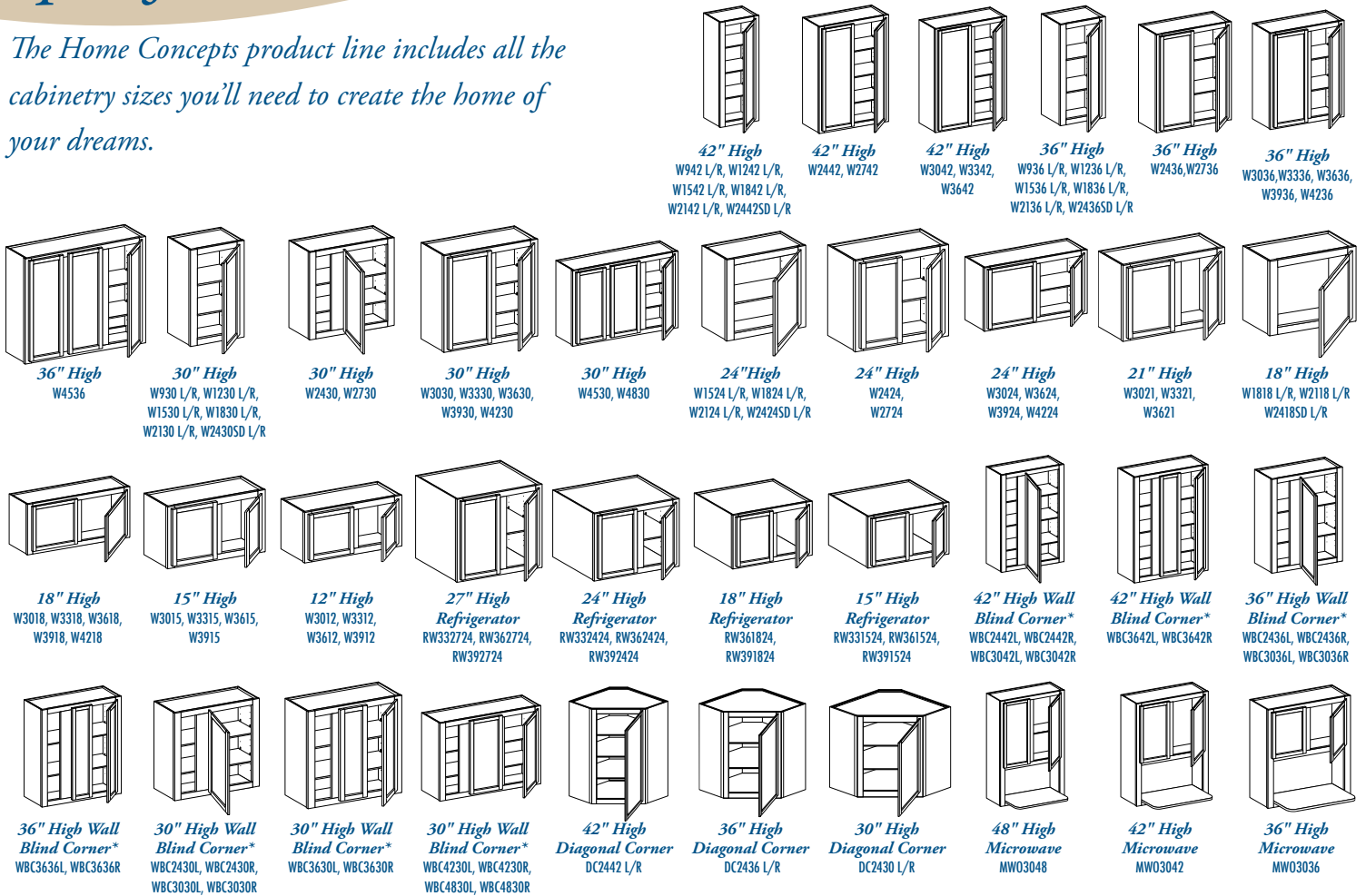
### Thermofoil

Thermofoil doors and drawer fronts are covered in a strong, scratch-resistant thermofoil that is thermally glued and vacuum-sealed. To create the popular raised panel appearance we use precision, diamond-head routers to carve the double-step perimeter edge and center panel detailing from a solid slab of medium density fiberboard.

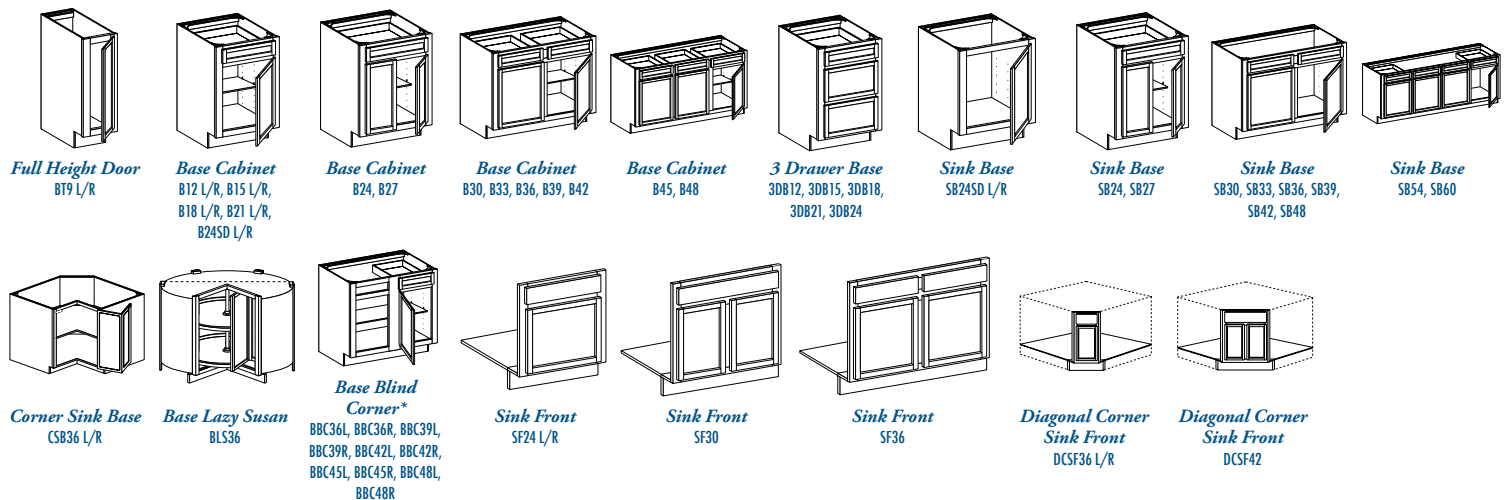
# Specifications

The Home Concepts product line includes all the cabinetry sizes you'll need to create the home of your dreams.

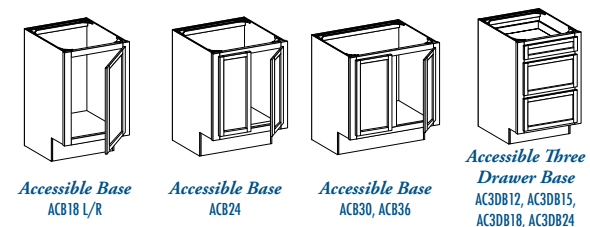
## WALL CABINETS



## BASE CABINETS

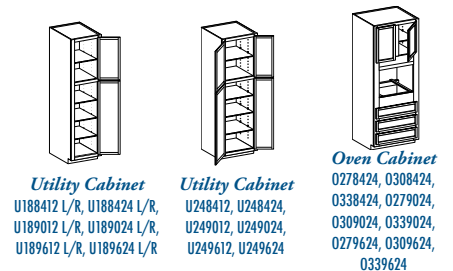


## ACTIVE LIVING BASE CABINETS

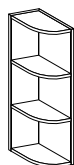


\*Left Blind Shown

## TALL CABINETS



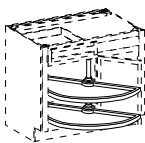
# ACCESSORIES



**Whatnot Shelf**  
WN30, WN36, WN42



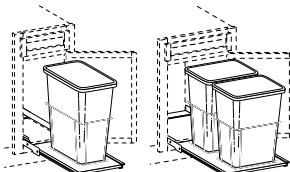
**Diagonal Tambour**  
DTSU24



**Swing Out Shelves**  
SOS45W

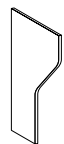


**Tilt Out Tray**  
TOT36W

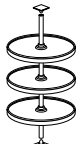


**Single Wastebasket**  
SW9.125

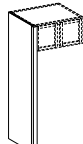
**Double Wastebasket**  
DW16.5



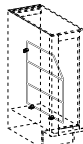
**Desk End Panel**  
DEP24



**18" Plastic Rotating**  
RSK18W42



**Refrigerator End Panel**  
REP1284 L, REP1296 L, DEP24 REP2484L, REP2496L



**Wire Tray Divider**  
WTD9



**Countertop Support**  
CS



**Valance**  
V36, V48, V72

# WOOD MOULDINGS



**Scribe Moulding**  
S3/4



**Scribe Moulding**  
S1 1/4



**Batten Moulding**  
B3/4



**Shoe Moulding**  
SM3/4



**Corner Moulding**  
C3/4



**Soffit Moulding**  
S03/4



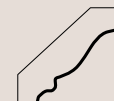
**Inside Corner Moulding**  
IC3/4



**Rope Moulding**  
R3/4



**Dentil Moulding**  
DM



**Crown Moulding**  
CM10



**Light Rail Moulding**  
LRM



**Decorative Crown Moulding**  
DCM



**Classic Wood Edge Moulding**  
CWE

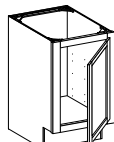


**Traditional Crown Moulding**  
TCM

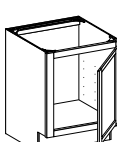


**Decorative Panel Moulding**  
DPM

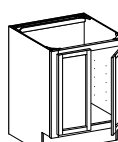
# VANITY CABINETS



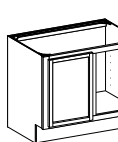
**Vanity Sink**  
VS1816 L/R



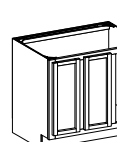
**Vanity Sink**  
VS245D L/R, VS245D18 L/R



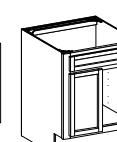
**Vanity Sink**  
VS27, VS2718



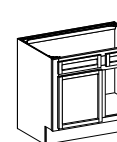
**Vanity Sink**  
VS30, VS3018, VS33, VS3318, VS36, VS3618, VS42, VS4218



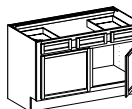
**Vanity Sink**  
VS48, VS4818



**Vanity Sink w/Blank**  
VS248, VS24818



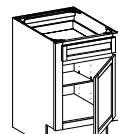
**Vanity Sink w/Blank**  
VS308, VS30818, VS368, VS36818



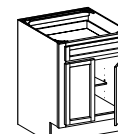
**Vanity Sink w/Blank**  
VSB36, VSB39, VSB42, VSB48



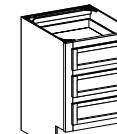
**Vanity Sink w/Blank**  
VSB54, VSB60



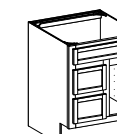
**Vanity Base**  
VB12 L/R, VB15 L/R, VB18 L/R



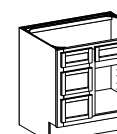
**Vanity Base**  
VB24



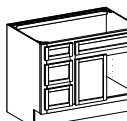
**Vanity Drawer Base**  
VDB12, VDB15, VDB18, VDB24



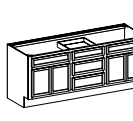
**Vanity Sink Drawer Base\*\***  
VSD824L L/R, VSD824L R/R



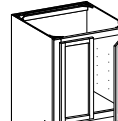
**Vanity Sink Drawer Base\*\***  
VSD830R L/R, VSD830L L/R



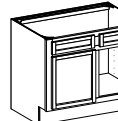
**Vanity Sink Drawer Base\*\***  
VSD836R, VSD836L



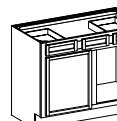
**Vanity Sink Drawer Base**  
VSD860DB



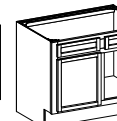
**Just Right Vanity Sink**  
VS27BH



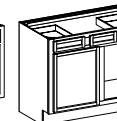
**Just Right Vanity Sink**  
VS30BH, VS33BH, VS36BH



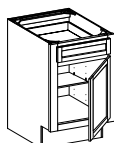
**Just Right Vanity Sink w/Blank**  
VS248BH



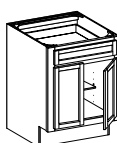
**Just Right Vanity Sink w/Blank**  
VS308BH, VS368BH



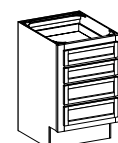
**Just Right Vanity Sink Base**  
VSB36BH, VSB42BH, VSB48BH



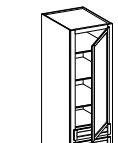
**Just Right Vanity Base**  
VB12BH, VB15BH, VB18BH



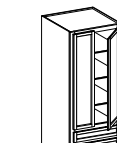
**Just Right Vanity Base**  
VB24BH



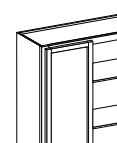
**Just Right Vanity Base**  
VDB12BH, VDB15BH, VDB18BH, VDB24BH



**Linen Cabinet**  
VLC188421 L/R



**Linen Cabinet**  
VLC248421



**Water Closet**  
WC2436

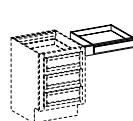


**Medicine Cabinet**  
MC1530 L/R

Door No Mirror

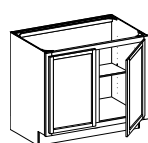


**Medicine Cabinet**  
MC1524 L/R

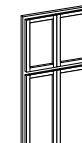


**Vanity Knee Drawer**  
VKD36

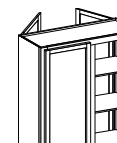
# SEMI-CUSTOM OPTIONS



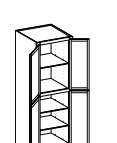
**B36 FH**  
FH - Full Height Doors



**U248424 FO**  
FO - Front Only



**W3042 P**  
P - Peninsula



**U249024 TKU**  
TKU - Toe Kick Unattached



## The Wellborn Quality in Home Concepts

Since 1961, Wellborn Cabinet, Inc., has been manufacturing quality kitchen and bath cabinetry in Ashland, Alabama. It all began in a small cabinet shop to build cabinets for the local markets. Since that time, Wellborn has become a state of the art manufacturing facility of over 1.8 million square feet that combines some of the most advanced technology systems in the industry with nearly 50 years of acquired knowledge and experience in high quality cabinetry craftsmanship.

## Green Choice is About Taking Action

Environmental stewardship has been part of Wellborn's culture since its beginning. This responsibility has never been just about words. It has been about decades of actions, investments and practices. At Wellborn we have recycling programs, utilize wood waste to generate power and steam and continue to lower VOC emissions through technology. We also partner with our suppliers to improve their environmental programs. This is why you will find the KCMA Environmental Stewardship Program seal on our cabinetry.

The Green Choice program ensures that you are purchasing a brand of cabinets from a company that takes conscious steps to protect and minimize the overall impact on our environment.



38669 Hwy. 77 • Ashland, Alabama 36251  
(256) 354-7151 • Fax (256) 354-7022

[wellborn.com](http://wellborn.com)



*Distributed By:*

Due to the natural variation and aging process, minor differences may be noticed in color match when replacing doors on existing cabinetry or adding additional cabinetry at a later date. It is a characteristic of stained wood finishes, thermofoil and laminate cabinetry to age over time when exposed to smoke, sunlight or general household detergents and chemicals. Therefore, we recommend using only a soft, clean cloth or furniture polish containing natural oils and cleaning emulsifiers to clean the finish of your Home Concepts wood cabinets. Products containing wax or silicone polishes are NOT recommended. In order to maintain the maximum quality and beauty of your thermofoil and laminate cabinetry, avoid exposure to moisture to the back edge of the doors. Undue wetness could result in delamination over time.

Due to the natural characteristics of wood and the limitations of photography and the lithographic printing process, the woods and wood finishes shown in this brochure may not accurately depict those offered by Home Concepts. See your local Home Concepts dealer for actual wood sample color selections and for complete warranty details. The Home Concepts Series has a machine sanded finishing process and does not include the detailed hand sanding technique featured in the Wellborn Collection. Therefore, Wellborn Cabinet, Inc., does not recommend designs combining these series. Combining the Home Concepts with the *Select Series*, *Premier Series*, and the *WoodCraft Series* in the same design will void the cabinet warranty.